



At University of Tsukuba, please contact :

- ✓ Prof. Takeaki Sakurai
Director, Office of Global Initiatives
- 📧 sakurai.takeaki.ft@u.tsukubai.ac.jp
- 📧 irvine-office@un.tsukuba.ac.jp

PROCEDURE FOR BILATERAL EXCHANGE

University of Tsukuba submits nomination to UCI with requested documents.

UCI Study Abroad Center receives and reviews nominations.

When the nomination is accepted, the Study Abroad Center will invite students to apply in the UCIAbroad portal within 30 days of their nomination.

Students will be notified of their status change in UCIAbroad within 30 days of the application deadline.

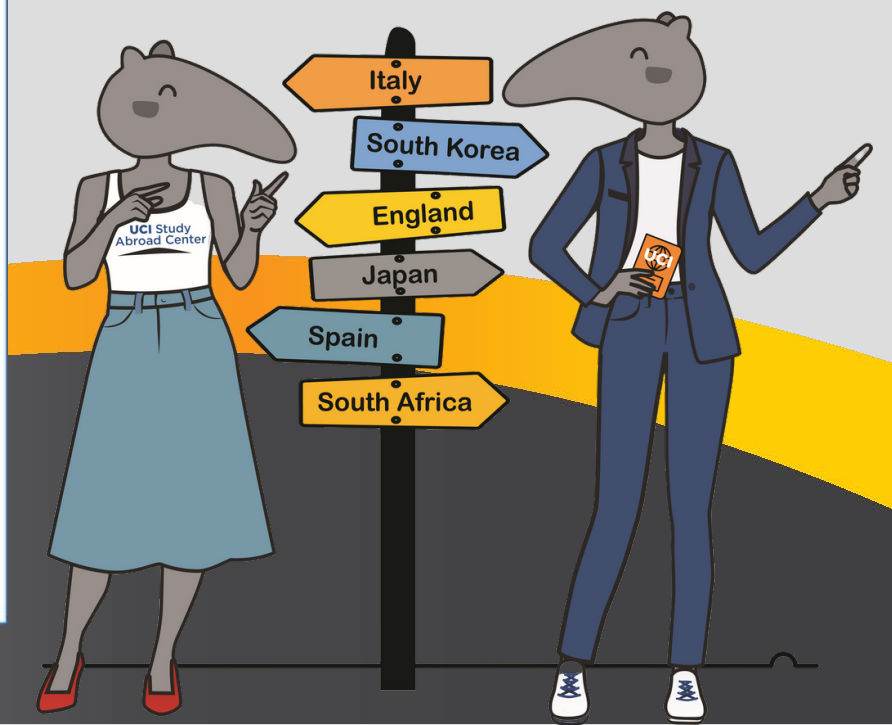
Bilateral Exchange Program

STUDYABROAD.UCI.EDU

WHY UCI?*



Note: Bilateral Exchange students must be nominated by University of Tsukuba to attend UCI.



*Visit the UCI Facts webpage for more information.

ACADEMIC REQUIREMENTS

Level of Study: Undergraduate only

Minimum GPA required: 2.8

Students must have studied at least 2 full semesters at University of Tsukuba before the application period starts.

Each academic year is divided into 3 terms, or we refer to them as quarters at UCI.

Each term consists of 10 weeks of lectures plus 1 week of final examinations (during the 11th week).

Bilateral Exchange is only offered during the following terms:

Academic Year

mid-September mid-June

Fall Quarter

mid-September mid-December

Winter & Spring Quarters

mid-January mid-June

LANGUAGE REQUIREMENTS

*** If your home university uses English as their primary language of study, please upload a copy of your university's transcript in the **Language Requirements** section of our application. ***

English

TOEFL(minimum scores)

- Internet-based test (iBT) or iBT Home Edition
80(min) or better
- Paper-delivered test
60 (min) or better

IELTS(minimum scores)

- 6.5 or higher

A P Exam

- **English Language and Composition**
3,4,5
- **English Literature and Composition**
3,4,5

IB Exam Scores

- **Standard Level Examination in English (Language A only)**
6 or 7
- **Higher Level Examination in English (Language A only)**
5, 6 or 7

Duolingo Test (DET)

- 115(min)

Other Languages

Please visit the UCI School of Humanities website:
bit.ly/3IEReCV

[Go to →"Language Placement Chart"](#)
for more information.

COURSES & REGISTRATION

- **Language of Instruction:** English
- **Course Load:** Students are required to enroll in a minimum of 12 units (normally 3 courses) each quarter. This is a requirement to maintain their immigration status. Most students enroll in 12-16 units each quarter (3-4 courses).
- Students have to register for courses towards the end of the previous quarter.
- New incoming students are considered "**New Transfer Students**" for registration purposes. If students are staying at UCI for more than one quarter, they will be considered a "**Continuing Student**" after their first quarter.
- You may access your unofficial UCI transcript on the web via Student Access using your student login for 60 days after your final quarter.
- Students can review the Schedule of Classes at:
www.reg.uci.edu/perl/WebSoc



COURSES AVAILABLE

catalogue.uci.edu

Bilateral exchange students can enroll in a wide range of courses at UCI. Students can access [the UCI General Catalogue](#) online for course descriptions. However, not all courses in the catalogue are offered each quarter and some may not be offered at all.

Students may not be allowed to enroll in certain classes due to a restriction, such as a prerequisite requirement. Yet, students may be able to get approval to enroll from the department and/or professor, by filling out a prerequisite clearance form.

Restrictions for certain courses can be found on the [Reciprocity](#) page of our website



FEES

- ✓ **Registration Fees:** Bilateral Exchange students are NOT required to pay UCI Registration Fees. The registration fee is waived about two weeks before the UCI fee payment deadline for each quarter the student will be attending UCI.
- ✓ **Health Insurance Fee:** All students attending UCI are required to have health insurance. Students are responsible for either paying for UCSHIP health insurance or obtaining a health insurance waiver due to having private coverage.
- ✓ **Educ Technology Fee:** The non-refundable eTech Fee is required of all students, including exchange students, and is used to support the maintenance and improvement of existing education technology, and new services and capabilities. The fee is assessed after the third week of instruction.

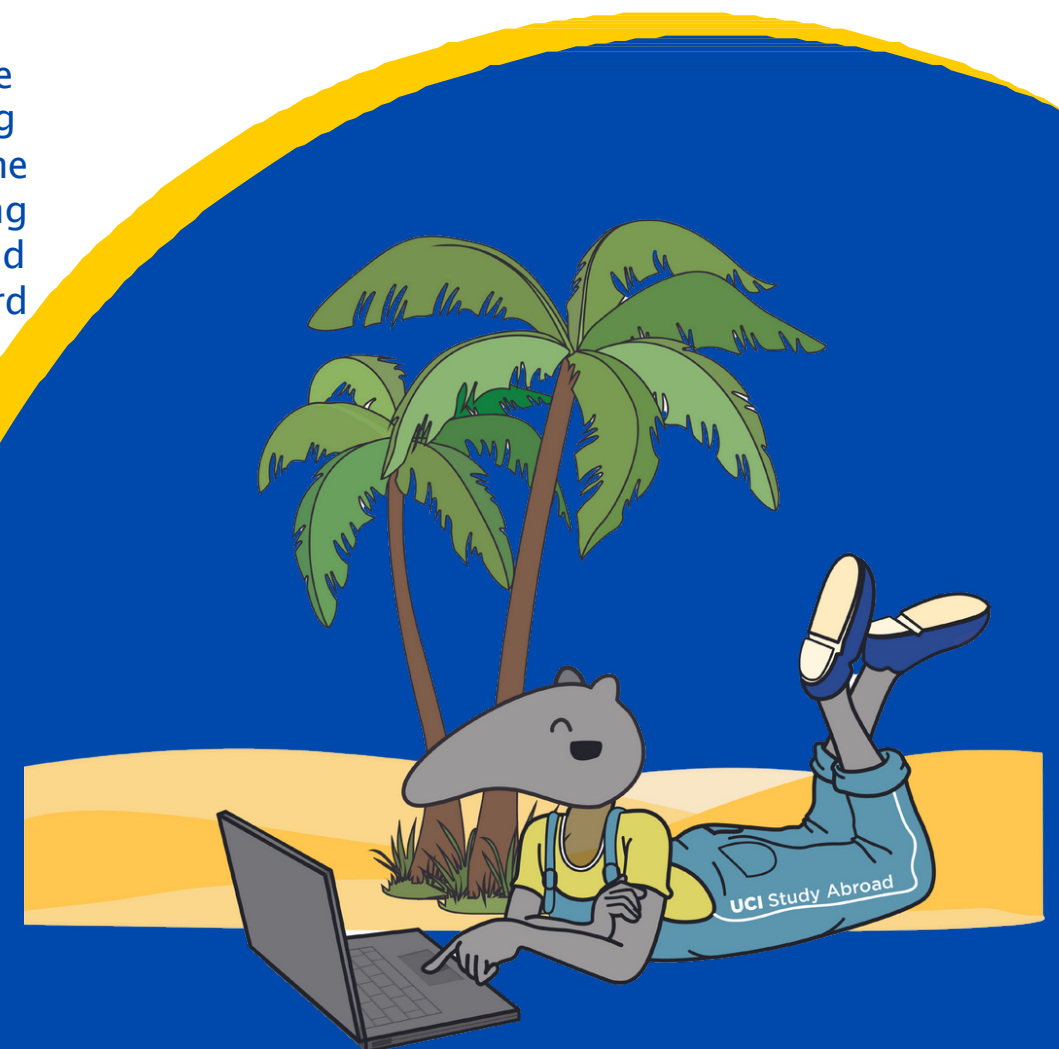


VISA

All visa and immigration-related questions should be directed to the International Center.

internationalcenter@uci.edu

Newly accepted students will receive additional information from the International Center about their DS-2019 and other necessary steps. Students are encouraged to read all the information carefully and follow any instructions given.



HOUSING

UCI offers a variety of both on-campus and off-campus housing options.

ON-CAMPUS HOUSING

Themed Communities: students have the opportunity to explore their interests and talents, build relationships, learn, and grow outside the classroom. Students are placed with peers who share their interests in art, music, technology, sustainability issues, outdoor adventure and more!

American Campus Communities (ACC): five Apartment Communities, privately operated by American Campus Communities, located on the east side of campus and offer housing to single (non-married) undergraduates and graduate students.

OFF-CAMPUS HOUSING

If students aren't planning to live on-campus, it is their responsibility to find off-campus housing. Note that some "off-campus" options are across the street and closer than some "on-campus". More information about off-campus housing, can be found [here](#).

GETTING to UCI

Either by plane, taxi, bus or train, students can easily access UCI!

Flights to Southern California

- John Wayne Santa Ana International Airport (SNA)– Orange County 8 mins.
- Los Angeles International Airport (LAX) – Larger airport 50 mins.

Private Vehicles/Rideshares

- Uber & Lyft
- LA yellow cab
www.layellowcab.com
- Prime Time Shuttle and Super Shuttle
www.primetimeshuttle.com/

Bus + Train from LAX

- Flyawaybus
www.flylax.com/flyaway-bus
- Amtrak
www.amtrak.com/home
- Pacific Surfliner
www.pacificsurfliner.com



DEADLINES

To submit nominations

Academic Year / Fall Quarter → January 15
Winter & Spring Quarters → July 15

To create profile in UCIAbroad Portal

Academic Year / Fall Quarter → February 15
Winter & Spring Quarters → August 15

UCI welcomes you!

